

DISHOVER FLOORING

ECO-FRIENDLY FLOORING
MANUFACTURER

**CATALOGUE
SPC FLOORING**

2022



WEB SITE
www.dishoverflooring.com

E-MAIL
sales@dishoverflooring.com

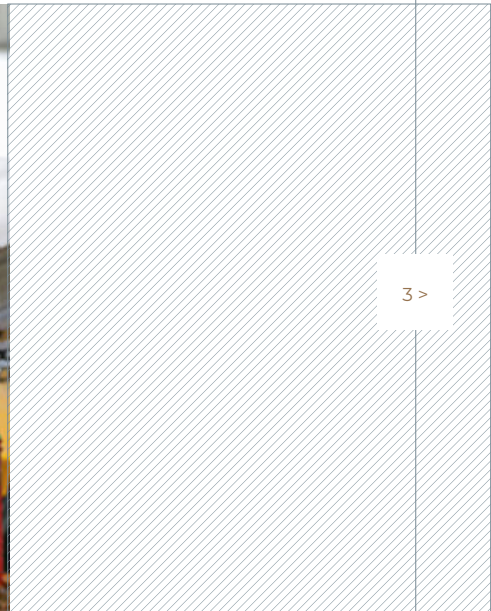
PHONE NO
+8655163648520

>>



WELCOME

AS A SOCIALLY RESPONSIBLE COMPANY, DISHOVER INTRODUCES ZERO-POLLUTION VINYL FLOORING PRODUCTS, INCLUDING SPC, VSPC, LVT AND WPC. WANTING TO DO SOMETHING FOR THE PLANET WHILE BEAUTIFYING YOUR LIFE.



3 >

About us

DISHOVER has been designing and manufacturing vinyl flooring since 2011. With our technologically advanced production facilities, professional technicians and experienced sales team, we produce high value-added products at attractive prices to provide quality products and services to our customers worldwide.

*Every flooring is
the embodiment of
DISHOVER's ingenuity.*

INDEX

THANKS TO TECHNOLOGICAL DEVELOPMENTS, A NEW GENERATION OF VINYL FLOORING PRODUCTS HAS BEEN CREATED AND DISHOVER WILL INTRODUCE YOU TO OUR LEADING FLOORING PRODUCTS.

SPC FLOORIN 6

FEATURES 7

WOOD SERIES 9

STONE SERIES 25

ABSTRACT SERIES 33

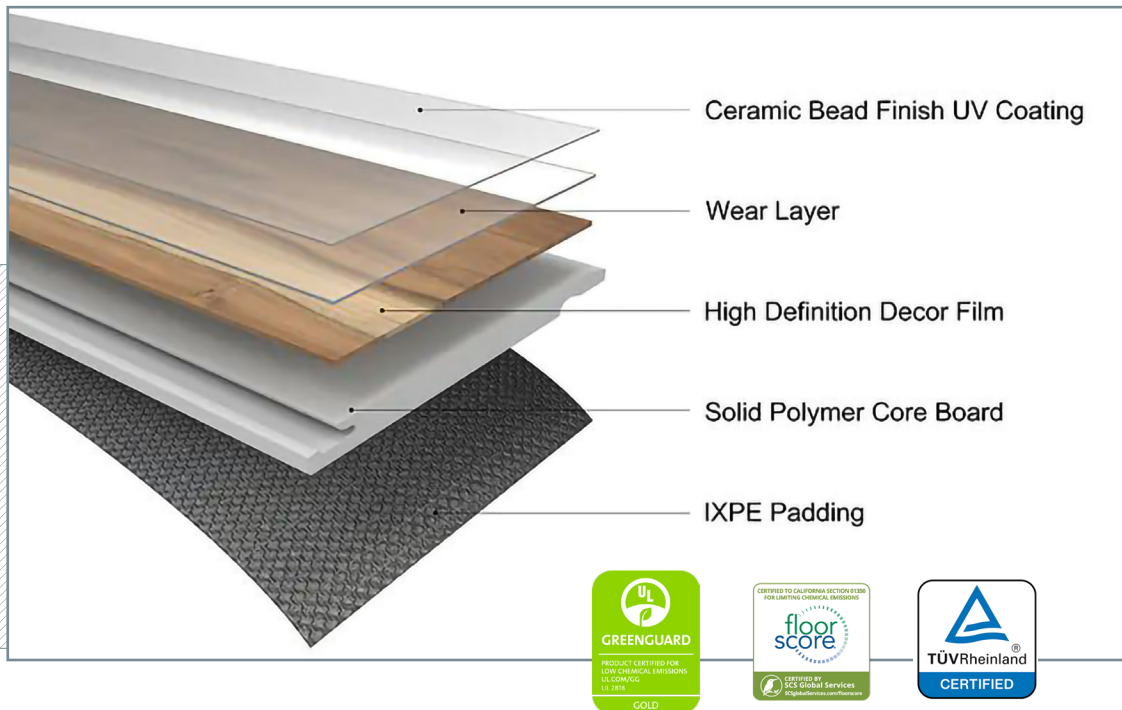
FAQ 35

< 4



SPC Rigid Vinyl Flooring

LOOK REAL, FEEL NATURAL



Stone Plastic Composite (SPC) is a hardcore vinyl flooring. Thanks to the diversity of decorative layers, it can express the visual effect of any material with high simulation and is suitable to match any interior environment. It has excellent waterproof performance. SPC flooring is made of one-time hot-melt lamination, no adhesive is used in the process, which is healthy and environmentally friendly, suitable for use in places with high requirements for air environment.

SPC flooring has an IXPE padding layer at the bottom for more comfortable footing and excellent sound absorption. SPC flooring uses a dense structure formed by high-purity polyethylene resin and high-pressure hot-melt stone powder, which endows it with the advantages of non-deformation, non-cracking, fireproof and insect-proof.

The SPC floor adopts the click system, which is easy to install and suitable for DIY installation. The installation process does not need to use adhesives to avoid volatile harmful substances brought in by the adhesives. It can be used after installation, and it is easy to disassemble and easy to replace later.

FEATURES

The SPC floor is made of stone powder and polyvinyl chloride thermal fusion. The surface is laminated with a decorative layer and a wear-resistant layer. The structure is compact and has excellent waterproof performance. It can be used in wet environments such as bathrooms. The product is made of new materials. No adhesives and volatile additives are used in the production process. It is green and environmentally friendly, and can be used in places with high air environment requirements such as hospitals and schools.

The bottom of the SPC flooring has an IXPE filling layer, which is more comfortable on the feet and has excellent sound absorption. SPC flooring adopts a dense structure formed by high-purity polyethylene resin and high-pressure hot-melt stone powder, giving it non-deformation, non-cracking, fire resistance and insect resistance.

The SPC flooring adopts a snap system, which can be easily installed on different types of floor bases, which is easy to install and suitable for DIY installation. The installation process does not require the use of adhesives, avoiding the introduction of volatile harmful substances into the adhesives. It can be used after installation, easy to disassemble, and easy to replace later.



7 >





WOOD SERIES

SPC FLOORING

TECHNICAL DETAILS

Physical Construction	customizable	
Size	7"x48" 9"x48" 9"x60"	
Thickness	3.5mm- 6.5mm	
Wear layer	0.3mm- 0.7mm	
Finish	Antique Wood Texture	
Padding	1.0mm / 1.5mm IXPE	
Edge profile	Square Edge / Micro Bevel / Enhanced Bevel	
Click	Uniclic / Valinge / I4F	
Environmental		
Formaldehyde Emission(In air)	EN 14041:2004	Pass - ≤0.08mg/m ³
Phthalates Content	ASTM D6007-14	ND - Not Detected
Migration of certain elements	EN 14372: 2004	ND - Not Detected
Formaldehyde	EN71-3:2013+A1:2014Acetal-	ND - Not Detected
Acetaldehyde	FloorScore Indoor Air Quality	Pass - 3.69ug/m2-h
TVOC	SCS-FS-06767	Pass - 2.69ug/m2-h Pass - 178.6ug/m2-h
Testing		
Dimensional	ASTM F2199	Pass
Stability	80°C,6h	Pass - 0.01%
Curling	80°C,6h	Pass - 0.01mm
Residual	ASTM F1914	Pass - Avg ≤ 1.0%,Max 1.2%
Peel Resistance	EN ISO 24345:2021	Pass - 145N/5cm
Impact Insulation Class (IIC)	ASTM E492-09	57dB
Sound Transmission Class (STC)	ASTM E90-0	51dB
Reaction To Fire	ASTM D6007-14	Bfl-s1
Critical Flux	EN 13501-1: 2007	≥ 11.1kW/m ²
Smoke	EN ISO 9239-1	139.1%×minutes
Abrasion Resistance	EN660-2:1999 & EN649:2011	1.4mm ³ /100 Revolutions
Castor Chair Test	EN 425:2002 Uniclic System	Wear Group T
Locking Strength		Pass - No Damage Pass - 262 & 269N/5cm
Scratch Performance Resistance To	ASTM F925-13	Pass - 2800g
Chemicals Thermal Conductivity	EN 12667:2001 EN	Pass - Not Affected Pass - 0.122 W/(m·K)
Water Tightness	13553:2017	Pass - No Sign
Dynamic Coefficient of Friction	EN 13893:2002	Pass - Class DS

9 >



Wood



DF-SW-501



DF-SW-502

< 10



DF-SW-503

E-mail: sales@dishoverflooring.com



DF-SW-504



DF-SW-505

11 >



DF-SW-506



more colors, please contact us



DF-SW-507

Wood

< 12



DF-SW-508



DF-SW-509

E-mail: sales@dishoverflooring.com



DF-SW-510



DF-SW-511

13 >



DF-SW-512



more colors, please contact us



DF-SW-513

Wood

< 14



DF-SW-515



DF-SW-516

E-mail: sales@dishoverflooring.com



DF-SW-518



DF-SW-521

15 >



DF-SW-523



more colors, please contact us



DF-SW-524

Wood

< 16



DF-SW-527



DF-SW-528

E-mail: sales@dishoverflooring.com



DF-SW-901



DF-SW-902

17 >



DF-SW-903



more colors, please contact us



DF-SW-904

Wood

< 18



DF-SW-905



DF-SW-906

E-mail: sales@dishoverflooring.com



DF-SW-907



DF-SW-908

19 >



DF-SW-909



more colors, please contact us



DF-SW-910

Wood

< 20



DF-SW-911



DF-SW-912

E-mail: sales@dishoverflooring.com



DF-SW-913



DF-SW-914

21 >



DF-SW-915



more colors, please contact us



DF-SW-916

Wood

< 22



DF-SW-917



DF-SW-918

E-mail: sales@dishoverflooring.com



DF-SW-919



DF-SW-921

23 >



DF-SW-922



more colors, please contact us



STONE SERIES

SPC FLOORING

TECHNICAL DETAILS

Physical Construction	customizable	
Size	12" x 24" 18" x 18" 18" x 36"	
Thickness	3mm- 6mm	
Wear layer	0.3mm- 0.7mm	
Finish	Imitation Stone Texture / 3D Stone Texture	
Padding	1.0mm / 1.5mm IXPE	
Edge profile	Square Edge / Micro Bevel / Enhanced Bevel	
Click	Uniclic / Valinge / I4F	
Environmental		
Formaldehyde Emission(In air)	EN 14041:2004	Pass - $\leq 0.08\text{mg}/\text{m}^3$
Phthalates Content	ASTM D6007-14	ND - Not Detected
Migration of certain elements	EN 14372: 2004	ND - Not Detected
Formaldehyde	EN71-3:2013+A1:2014Acetal-	ND - Not Detected
Acetaldehyde	FloorScore Indoor Air Quality	Pass - $3.69\text{ug}/\text{m}^2\text{-h}$
TVOC	SCS-FS-06767	Pass - $2.69\text{ug}/\text{m}^2\text{-h}$ Pass - $178.6\text{ug}/\text{m}^2\text{-h}$
Testing		
Dimensional	ASTM F2199	Pass
Stability	80°C,6h	Pass - 0.01%
Curling	80°C,6h	Pass - 0.01mm
Residual	ASTM F1914	Pass - Avg $\leq 1.0\%$,Max 1.2%
Peel Resistance	EN ISO 24345:2021	Pass - 145N/5cm
Impact Insulation Class (IIC)	ASTM E492-09	57dB
Sound Transmission Class (STC)	ASTM E90-0	51dB
Reaction To Fire	ASTM D6007-14	Bfl-s1
Critical Flux	EN 13501-1: 2007	$\geq 11.1\text{kW}/\text{m}^2$
Smoke	EN ISO 9239-1	139.1%*minutes
Abrasion Resistance	EN660-2:1999 & EN649:2011	1.4mm ³ /100 Revolutions
Castor Chair Test	EN 425:2002 Uniclic System	Wear Group T
Locking Strength		Pass - No Damage Pass - 262 & 269N/5cm
Scratch Performance Resistance To	ASTM F925-13	Pass - 2800g
Chemicals Thermal Conductivity	EN 12667:2001 EN	Pass - Not Affected Pass - 0.122 W/(m·K)
Water Tightness	13553:2017	Pass - No Sign
Dynamic Coefficient of Friction	EN 13893:2002	Pass - Class DS

25 >

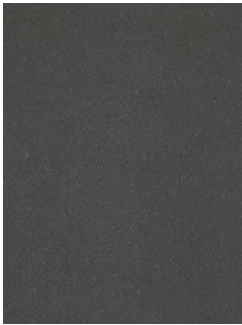




DF-SS-801

Stone

< 26



DF-SS-802



DF-SS-805

E-mail: sales@dishoverflooring.com

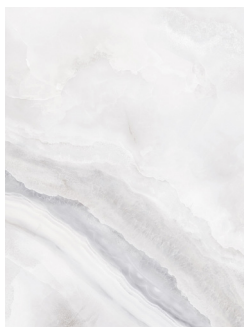


DF-SS-804



DF-SS-811

27 >



DF-SW-524



more colors, please contact us



DF-SS-813

Stone

< 28

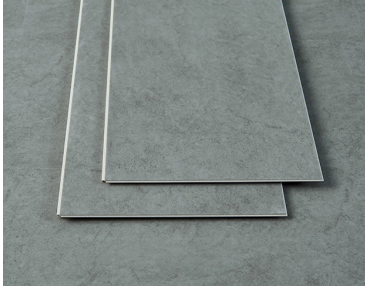


DF-SS-814



DF-SS-805

E-mail: sales@dishoverflooring.com



DF-SS-827



DF-SS-828

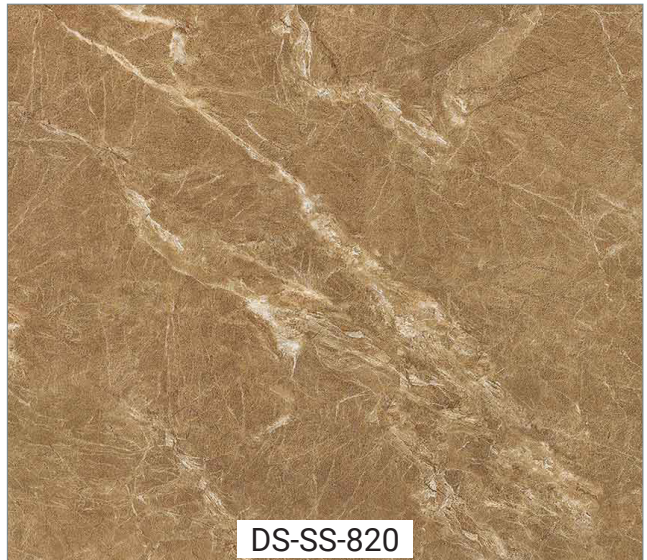
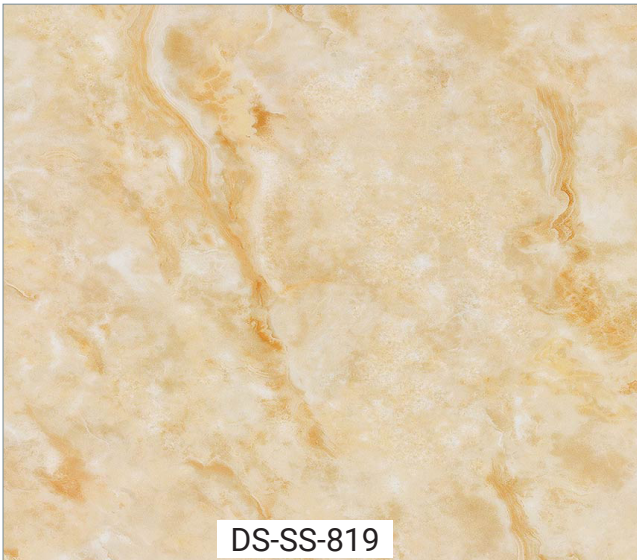
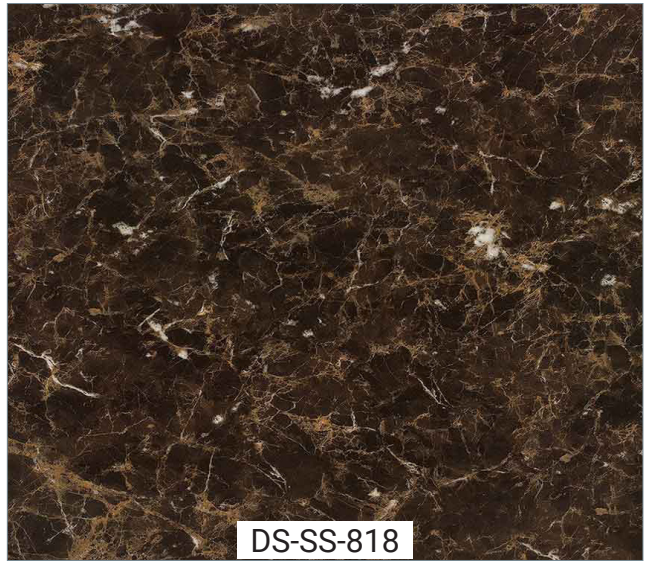
29 >



DF-SS-829



more colors, please contact us



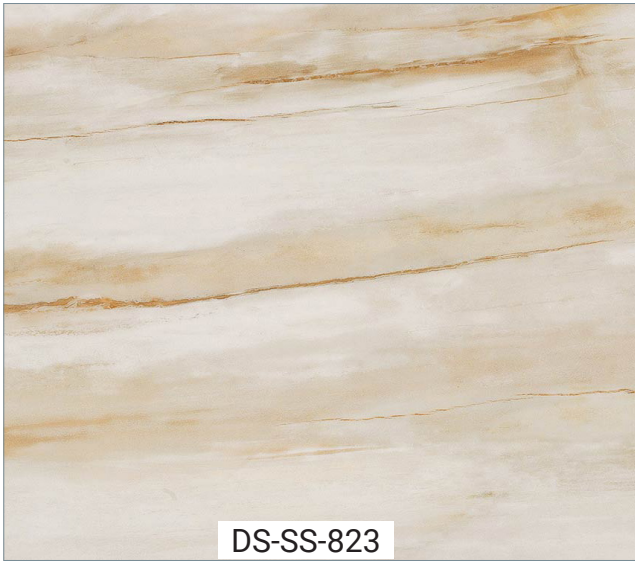
< 30



DS-SS-821



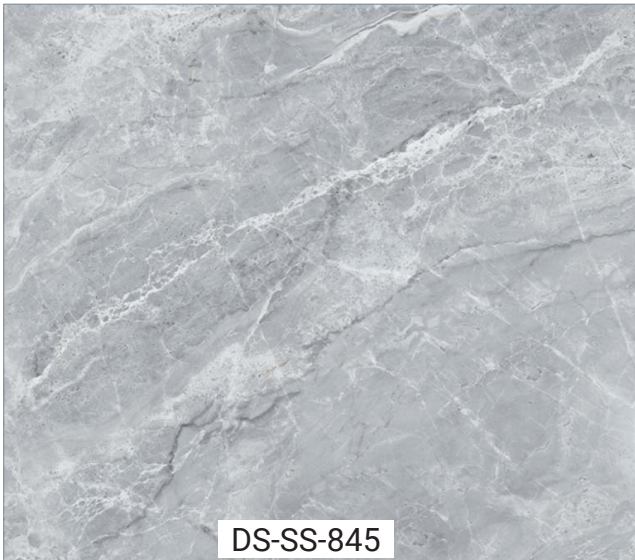
DS-SS-822



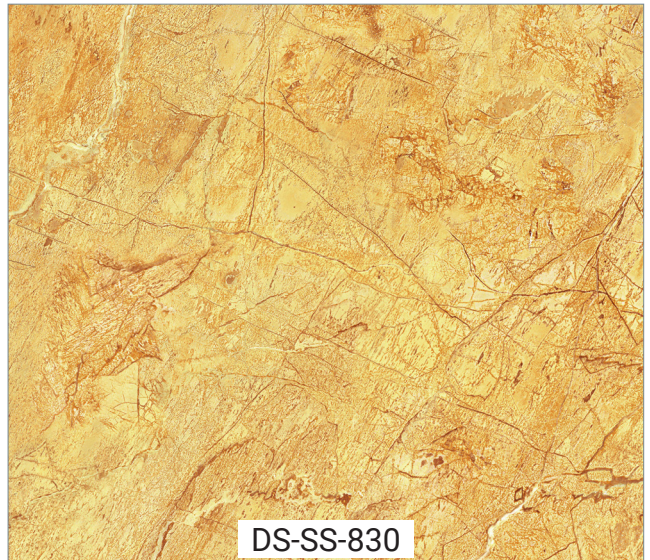
DS-SS-823



DS-SS-824



DS-SS-845



DS-SS-830

more colors, please contact us



ABSTRACT SERIES

SPC FLOORING

TECHNICAL DETAILS

Physical Construction	customizable	
Size	12" x 24" 18" x 18" 18" x 36"	
Thickness	3mm- 6mm	
Wear layer	0.3mm- 0.7mm	
Finish	abstract / old	
Padding	1.0mm / 1.5mm IXPE	
Edge profile	Square Edge / Micro Bevel / Enhanced Bevel	
Click	Uniclic / Valinge / I4F	
Environmental		
Formaldehyde Emission(In air)	EN 14041:2004	Pass - $\leq 0.08\text{mg}/\text{m}^3$
Phthalates Content	ASTM D6007-14	ND - Not Detected
Migration of certain elements	EN 14372: 2004	ND - Not Detected
Formaldehyde	EN71-3:2013+A1:2014Acetal-	ND - Not Detected
Acetaldehyde	FloorScore Indoor Air Quality	Pass - $3.69\mu\text{g}/\text{m}^2\text{-h}$
TVOC	SCS-FS-06767	Pass - $2.69\mu\text{g}/\text{m}^2\text{-h}$ Pass - $178.6\mu\text{g}/\text{m}^2\text{-h}$
Testing		
Dimensional	ASTM F2199	Pass
Stability	80°C,6h	Pass - 0.01%
Curling	80°C,6h	Pass - 0.01mm
Residual	ASTM F1914	Pass - Avg $\leq 1.0\%$,Max 1.2%
Peel Resistance	EN ISO 24345:2021	Pass - 145N/5cm
Impact Insulation Class (IIC)	ASTM E492-09	57dB
Sound Transmission Class (STC)	ASTM E90-0	51dB
Reaction To Fire	ASTM D6007-14	Bfl-s1
Critical Flux	EN 13501-1: 2007	$\geq 11.1\text{kW}/\text{m}^2$
Smoke	EN ISO 9239-1	139.1%*minutes
Abrasion Resistance	EN660-2:1999 & EN649:2011	1.4mm ³ /100 Revolutions
Castor Chair Test	EN 425:2002 Uniclic System	Wear Group T
Locking Strength		Pass - No Damage Pass - 262 & 269N/5cm
Scratch Performance Resistance To	ASTM F925-13	Pass - 2800g
Chemicals Thermal Conductivity	EN 12667:2001 EN	Pass - Not Affected Pass - 0.122 W/(m·K)
Water Tightness	13553:2017	Pass - No Sign
Dynamic Coefficient of Friction	EN 13893:2002	Pass - Class DS

33 >

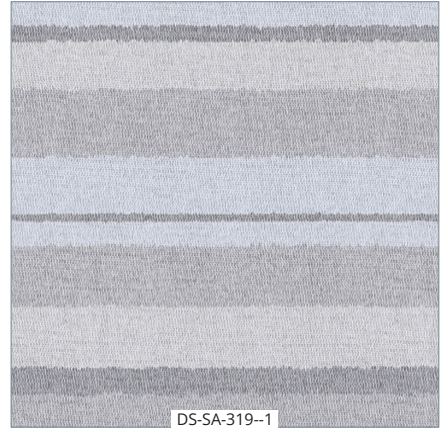




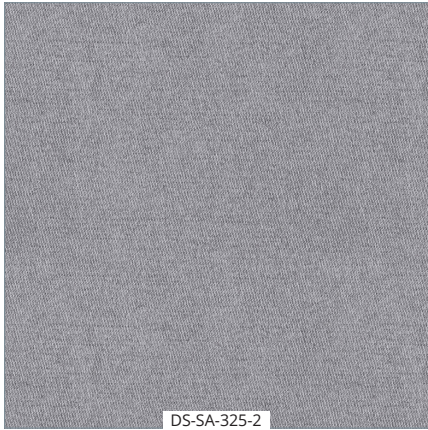
DS-SA-319-3



DS-SA-319-2



DS-SA-319-1



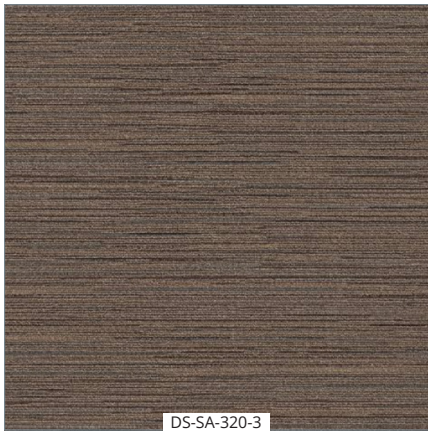
DS-SA-325-2



DS-SA-325-3



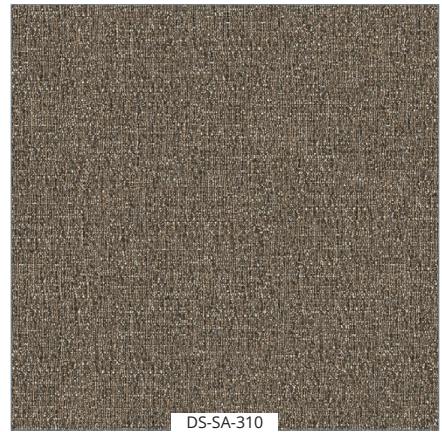
DS-SA-325-1



DS-SA-320-1



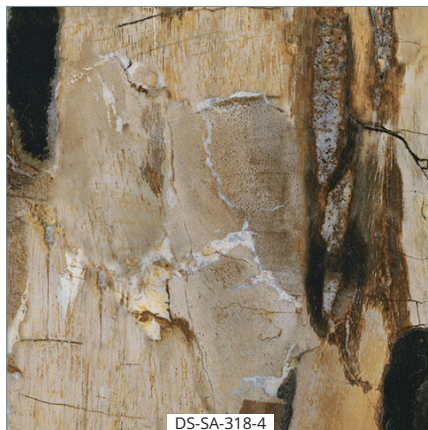
DS-SA-321-3



DS-SA-310



DS-SA-320-2



DS-SA-318-4



DS-SA-318-5

< 34

more colors, please contact us

FAQ

Who is DISHOVER?

DISHOVER is a professional flooring manufacturing company established in Hong Kong, China and its factory is located in Zhejiang, China. DISHOVER mainly produces eco-friendly flooring, including SPC flooring, VSPC flooring, WPC outdoor decoration products. With more than 10 years of manufacturing experience and advanced equipment, DISHOVER products are supplied to more than 30 countries worldwide. It has been well received by customers.

What kind of cooperation methods?

DISHOVER has a design team with 10 years of design experience and can provide you with ODM services. Of course, if you provide your product information, we can also become your OEM partner and protect your trade secrets. On the premise of win-win cooperation, we can also discuss the cooperation model suitable for you.

DISHOVER hopes to get rid of the bundle of interests and make each customer a lifelong friend.

Can I get free samples?

DISHOVER has a sample library of a certain size and can provide free samples to customers, Usually samples are free, we don't charge for it. However, we might charge courier cost or ask for customer's courier account. We know when a customer let us send samples, it means the customer has interest in the products or would like to give a chance to evaluate whether it could work with.

We really appreciate.

What's the payment term?

DISHOVER will confirm the transaction method for you while quoting, FOB, CIF, CNF, DDP etc. for mass production goods, you need to pay 30% deposit before producing and 70% before loading.

The most common way is by T/ T. L/C is also acceptable.

How to ensure product quality?

DISHOVER has the industry's advanced production equipment and a series of production management systems, and inspections will be carried out after each process, and we will carry out 100% inspections in accordance with customer requirements and international standards. After the packaging is completed, before loading, the random inspection will be carried out again.



<<

DISHOVER
2022 PRODUCTS SPC CATALOG

CONTACT
86 55163648520
sales@dishoverflooring.com

WEBSITE
www.dishoverflooring.com